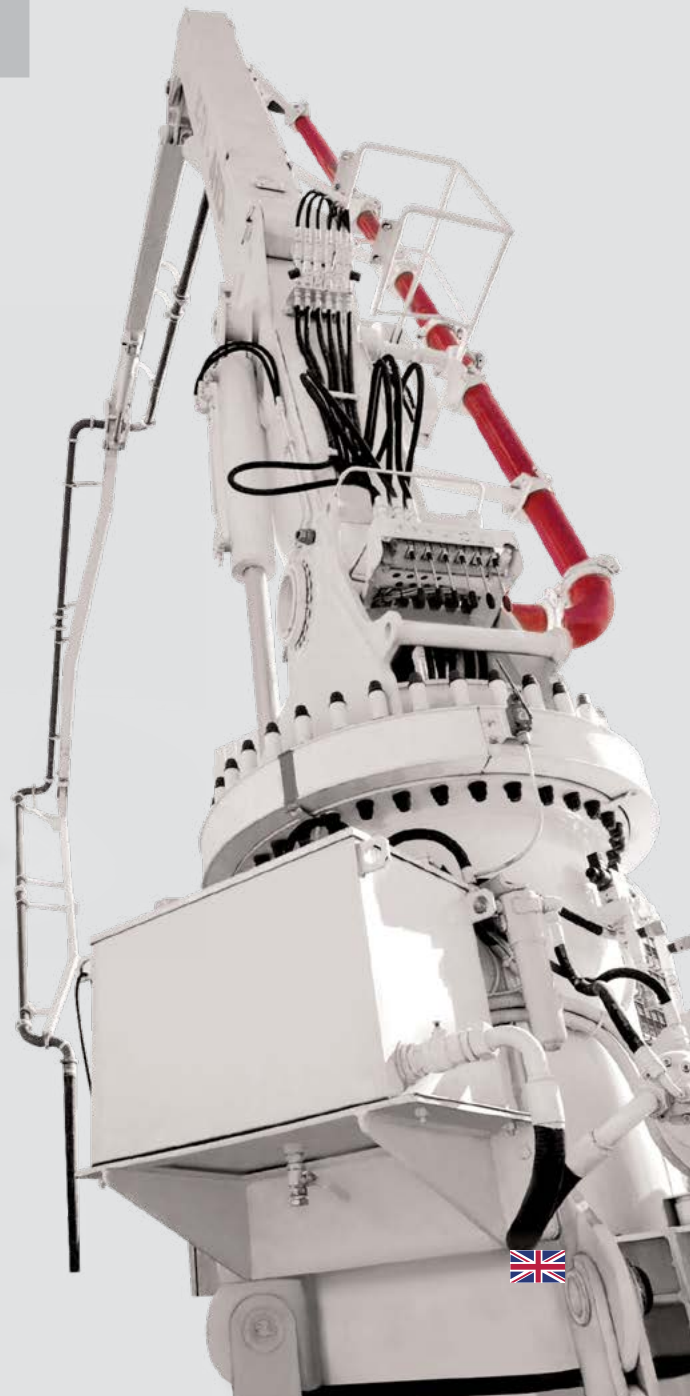


# WHY CIFA



**Portable Pumps  
and Placing Booms**

---



WHY  
CIFA



# PORTABLE PUMPS

CIFA pumping solutions are the result of a long experience in concrete application. They are designed and manufactured in the factory of Italy. With more than 40 years of history, CIFA portable pumps mean performance and reliability to satisfy all construction requirements. CIFA portable pumps range offers the best solutions for any jobsite conditions.



MANUFACTURING FACILITIES



PORTABLE PUMPS LEAN PRODUCTION



PRODUCTION TESTING AREA

## LEASING



Available in Italy, Russia, China, South Africa, Australia, USA and Germany.

## ITALIAN DESIGN



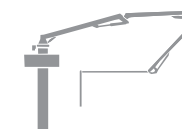
Main components of the CIFA truck pumps are Italian or German brand

## TRAINING FOR OPERATORS



### PORTABLE PUMPS

Full range with different concrete output and pressure, from 30 to 90 m³/h.



### PLACING BOOMS

Advanced solutions for skyscrapers building.



### PIPE AND DEVICES

To pump the concrete from the portable pumps to placing booms in the best way.

The CIFA portable concrete pump series offers a wide range of models which satisfy the various needs of concrete pumping and handling both in tunnels and above ground, over long distances and at considerable heights. Both diesel and electric motors models are available to accommodate every application and environment requirement. PC 607 and PC 709 are also available in crawler-mounted versions, fully equipped to work in hard-to-reach jobsites. The CIFA original pumping unit incorporates the characteristics of resistance, long life and exceptional performance with any type of concrete.

The main pump is an axial piston type with variable flow and constant power, a gear pump is used for auxiliary services.

- S-valve for any type of concrete, made of special steel and different thicknesses
- Rapid valve exchange
- Ideal operation even at high pressures with continuous and smooth pumping flow
- Automatic wear compensation
- Hydraulic system in open circuit
- Low noise
- Low running costs
- Easy maintenance and quick cleaning operations
- Machines can work up to -25°

## 8 SERIES



PC709



PC907



PCC907

## 6 SERIES



PC307



PC506



PC607



PCC607

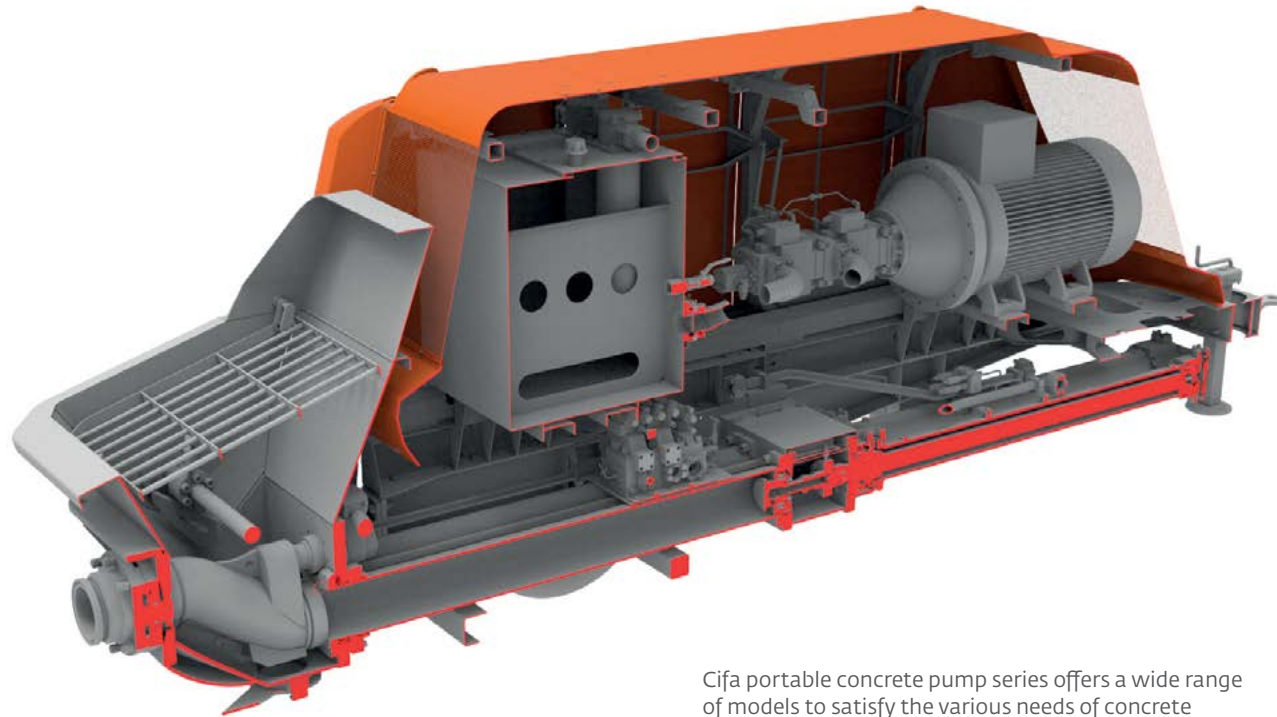


PC158





# PORTABLE PUMPS STRONG AND RELIABLE



Cifa portable concrete pump series offers a wide range of models to satisfy the various needs of concrete pumping over long distances and at considerable heights.

## POWER

The power source is provided by separate engine, diesel or electric. Available with diesel engines STEP3-A and Stage V, turbo and with water cooling. The electric motors are supplied according to IE3 rules.

## HYDRAULIC AND ELECTRONIC PUMPS

The main pump is an axial piston type with variable flow and constant power; gear pump is used for auxiliary services.



## REMOTE CONTROL

The Concrete pump comes complete with a 15 meter cable remote control as standard feature. It is also possible to have a radio remote control as option. Available only for S6 Series.



## WATER PUMP

Hydraulically driven water pump with washing pipe complete with nozzle.



## AIR COMPRESSOR

Available on request. Driven by hydraulic motor for pipeline cleaning.



## CONTROL PANEL

The control panel has all the commands and control instruments to ensure an easy and safe use. There is a display indicating the main parameters of use to check the maintenance scheduling. Available only the S6 Series.



## "S" VALVE

The structure is made with varying thickness to achieve maximum resistance to wear even when using difficult types of concrete.



## WEAR RING AND WEAR PLATE

The ring and the plate are made of special anti wear material against abrasion and stress due to the concrete flow.



## VIBRATOR ON GRID

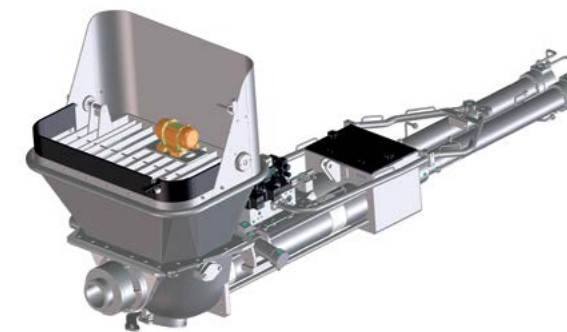
The standard supply includes the electric vibrator on grid controlled by remote control with cable.



## GREASING SYSTEM

To reduce maintenance the pumping units are equipped with an automatic greasing system including electric pump with grease tank.

# PUMPING UNITS



## GP "S6" SERIES

Open Loop type



## GP "S8" SERIES

Open Loop type



## MAIN IMPROVEMENTS:

Hopper new design and dimension.

S-valve new shape.

New cutting ring solution.

New anti-wear components: Plate and cutting ring.

Manual swing door.

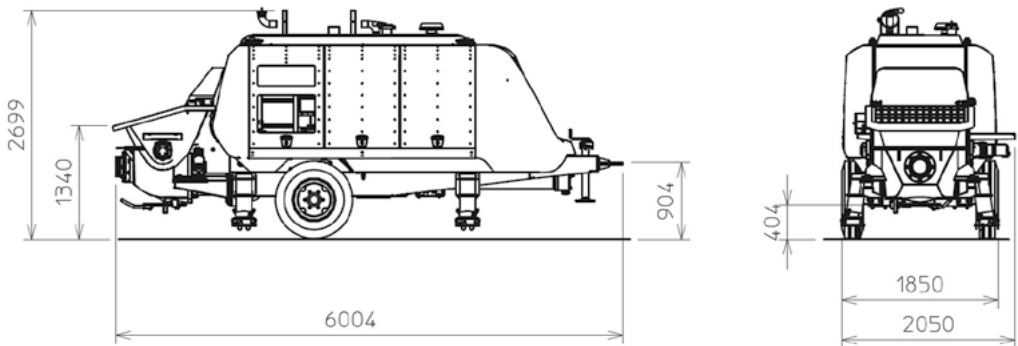


# DATA SHEET

## S8 SERIES



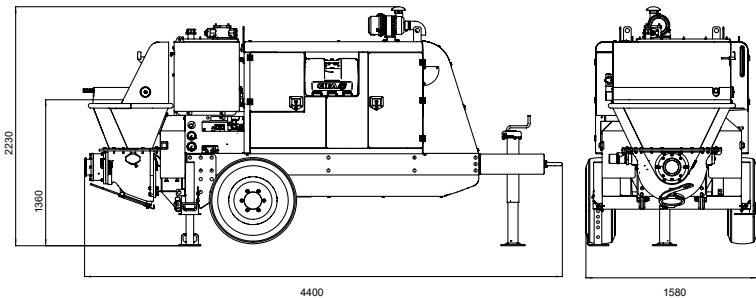
Model		PC 709	PC 907	PCC 907
Drive power IIIA	kW	130	130	130
Drive power Stage V	kW	130	130	130
Drive Power Electric	kW	110	110	110
Max. theoretical output	m³/h	70	87	87
Max. pressure on concrete	bar	90	66	66
Max. number of cycles per min.	-	20	26	26
Concrete cylinders diameter	mm	200	200	200
Stroke Length	mm	1800	1800	1800
Concrete hopper capacity	l	450	450	450
Rod side drive <input type="checkbox"/>	-	<input type="checkbox"/>	<input type="checkbox"/>	<input type="checkbox"/>
Piston side drive <input checked="" type="checkbox"/>				



## S6 SERIES



Model		PC 307	PC 506	PC 607	PCC 607
Drive power IIIA	kW	43	74.5	83	83
Drive power Stage V	kW	55	74.4	85	85
Drive Power Electric	kW	30	55	75	75
Max. theoretical output	m³/h	30	52	60	60
Max. pressure on concrete	bar	70	57	67	67
Max. number of cycles per min.	-	21	36	41	41
Concrete cylinders diameter	mm	176	176	176	176
Stroke Length	mm	1000	1000	1000	1000
Concrete hopper capacity	l	300	350	350	350
Rod side drive <input type="checkbox"/>	-	<input checked="" type="checkbox"/>	<input type="checkbox"/>	<input type="checkbox"/>	<input type="checkbox"/>
Piston side drive <input checked="" type="checkbox"/>					







# PC 158 STRONG AND RELIABLE



PC 158 is a 2-cylinder hydraulic piston pump with S-valve and variable output for pumping concrete, micro-concrete, special concrete and for shotcrete.

PC 158 is a reliable choice, especially in difficult working conditions.

PC 158 can be used both for concrete and mortar pumping thanks to its optimized hydraulic layout design.

- 4-cylinder liquid cooled diesel engine
- Hopper assembly with S-valve and agitator
- Centralized lubrication system
- Hydraulic circuit with optimized exchange sequence
- Electromechanical control board
- Variable displacement hydraulic pump
- 30 m cable remote control
- Accessory box
- Concrete grill with electric vibrator

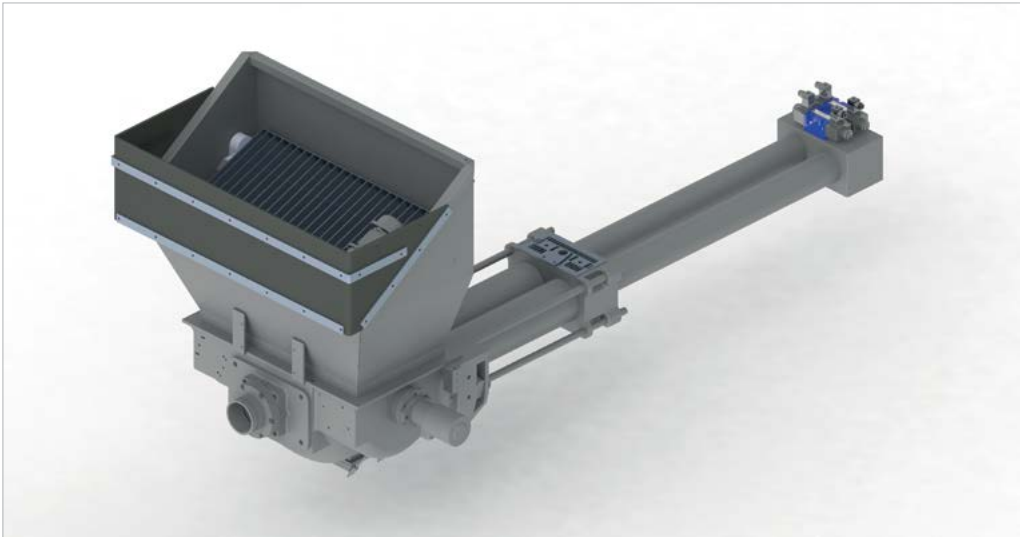


Light and extremely handy



Intuitive control panel

# PUMPING UNITS

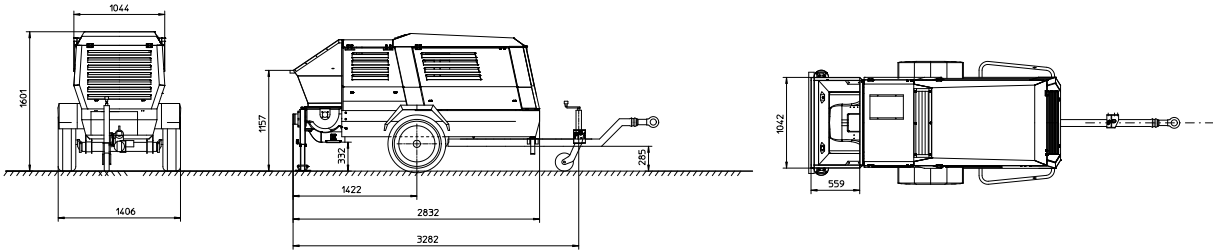


With 80 bar of maximum pressure, the PC 158 machine can pump between 2 and 15 cubic meters per hour of concrete to considerable heights and distances.



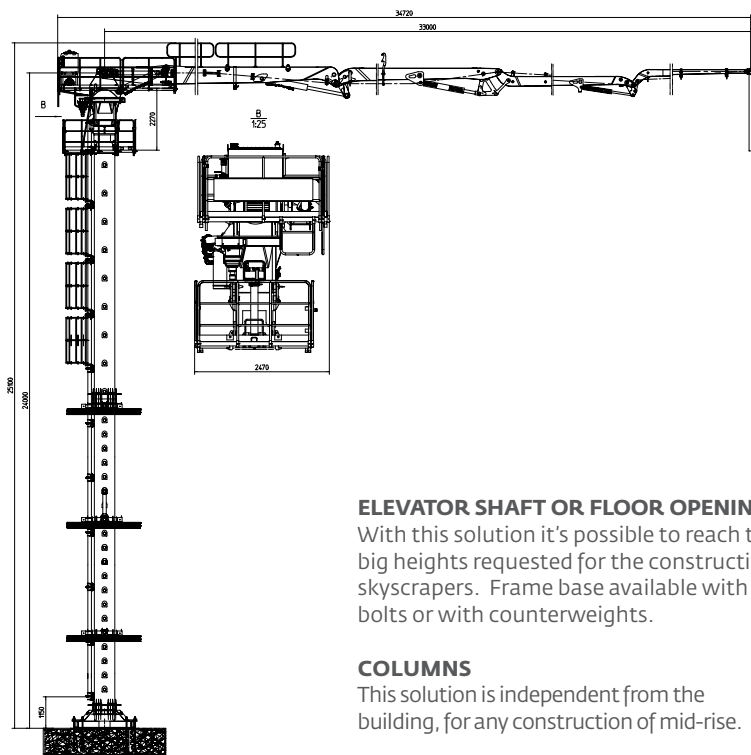
## PC 158

Model		PC 158
Liquid cooled diesel engine	-	STAGE IIIA OR STAGE V
Electric motor (upon request)	-	22 KW-400 V 50 HZ
Infinitely adjustable	m³/h	from 2 to 15
Max. theoretical output*	bar	80
Hopper capacity	l	250
Delivery distance*	m	200
Delivery height*	m	100
Chassis	-	Manual drawbar-fixed axle and pneumatic wheels





# THE PLACING BOOMS

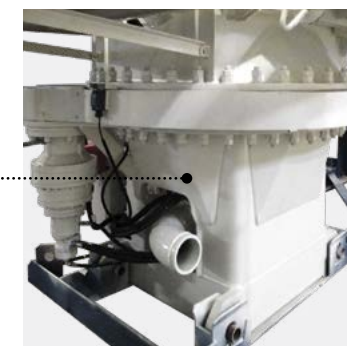
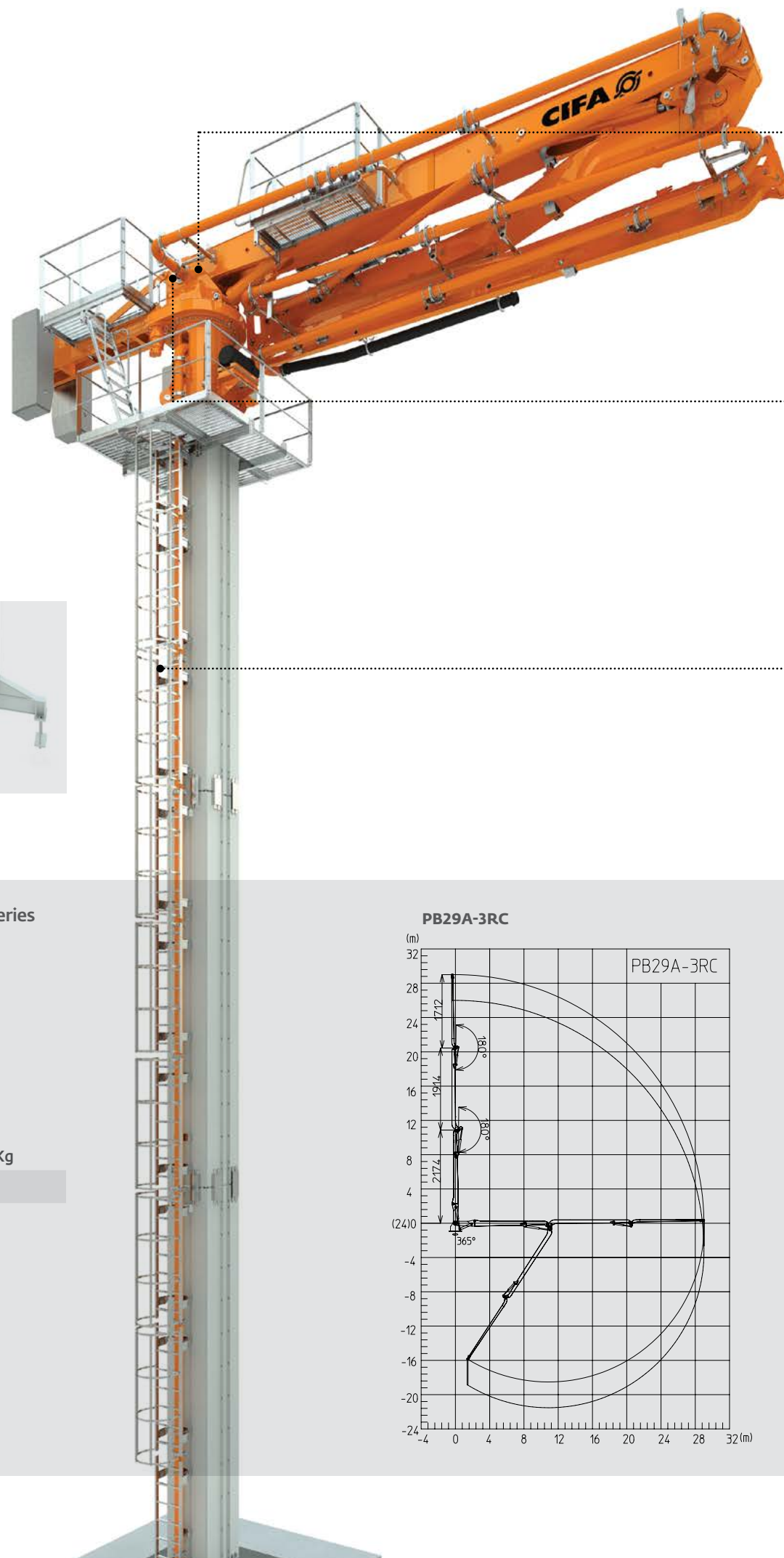


## ELEVATOR SHAFT OR FLOOR OPENING FRAME

With this solution it's possible to reach the big heights requested for the construction of skyscrapers. Frame base available with anchor bolts or with counterweights.

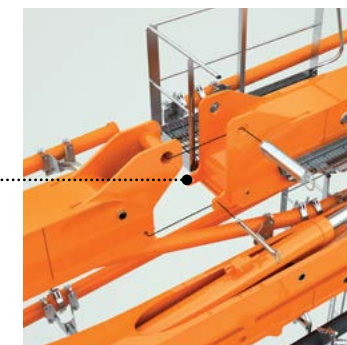
## COLUMNS

This solution is independent from the building, for any construction of mid-rise.



## UNDERTURRET

Thanks to a unique interface, the boom can be disconnected from the column quickly. By removing 4 pins, the boom can be moved and placed elsewhere in the jobsites. This solution is important in big jobsite, where one boom could work in different position.



## BOOM QUICK DEVICE

Available as optional, It is designed to reduce the overall weight and adapt the system to jobsite requirements.



## COLUMNS AND ADAPTORS

Columns are modular and 10 meters long. All segments are provided with ladder including safety cage and pipes supports, with rapid connection pins.



KT boom series come directly from the truck-mounted boom series and are designed to face the most different applications.

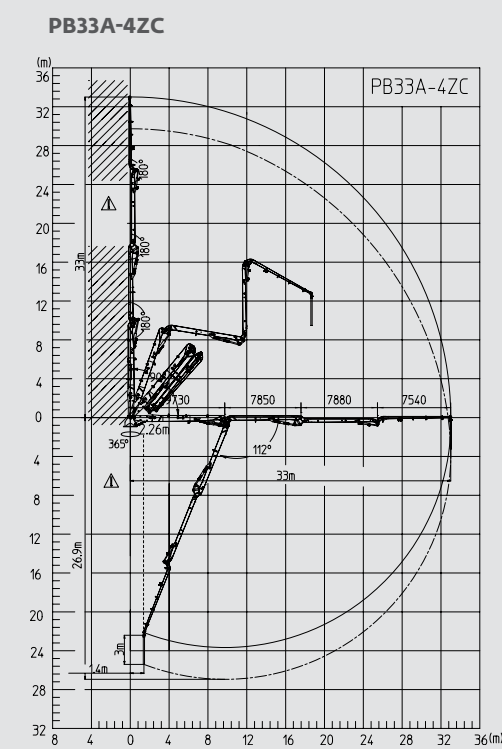
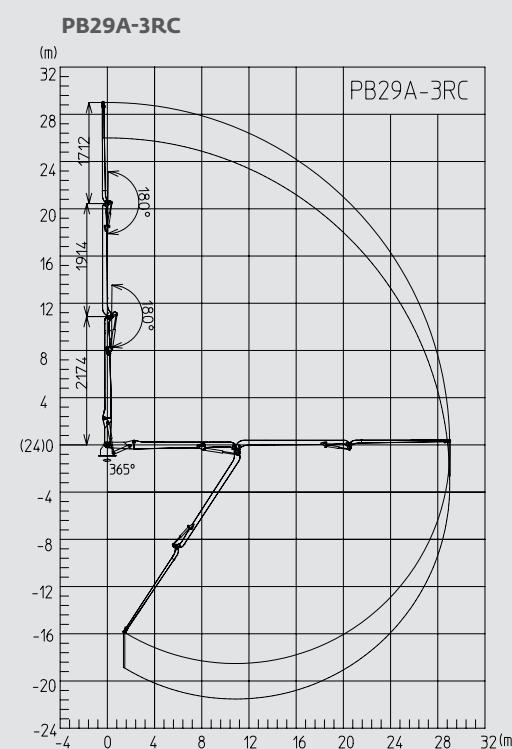
- Fast and easy deliver on truck
- Quick and safe assembly and placement
- Quick release device on first section (as option)
- Anchor bolts basement or ballast basement
- Self-climbing system fitted with elevator shaft or floor opening frame

Boom Type	N. of folding arms	Horizontal reach m	Quick disconnect	Heaviest component Kg	Total weight Kg
PB29A-3RC	3R	29	Yes	3300	4750
PB33A-4ZC	4Z	33	Yes	4700	5250

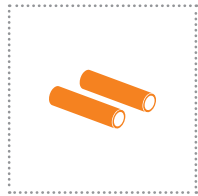


## REMOTE CONTROL

Comfortable and lightweight for boom control and for the management of the main functions of the machine.







# SPECIAL PUMPING ADDITIONAL COMPONENTS

A distribution system, to be defined as "Full Line", must include also concrete pipelines. CIFA Standard Pipes and double layer Long Life Pipes are able to resist at high pressure and to last longer. A concrete delivery line by CIFA also includes reductions, gaskets, joints, supports and others accessories.



PIPES - REDUCTIONS - ELBOWS  
MADE IN CIFA



JOINTS GASKETS



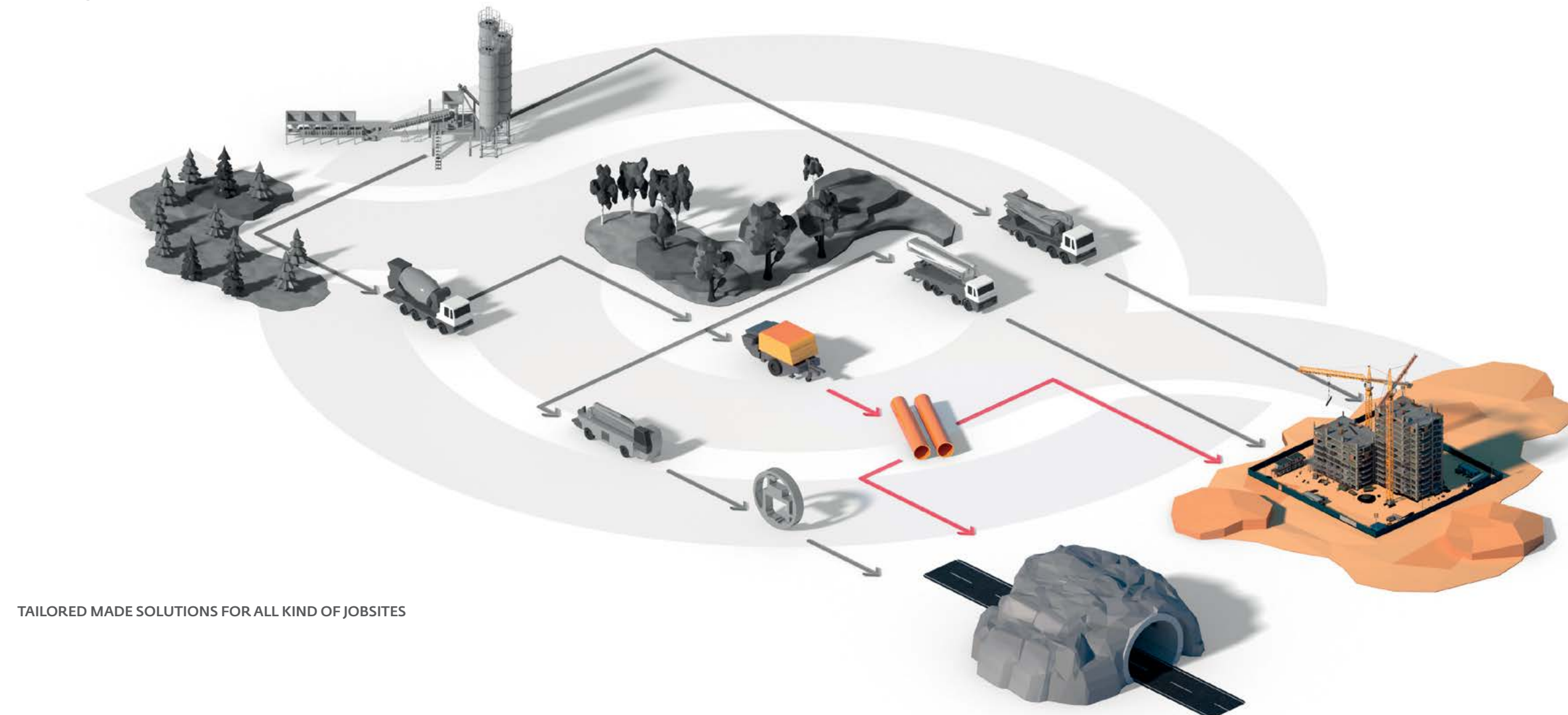
CLEANING



MANUAL OR HYDRAULIC  
SHUT-OFF VALVE



DEVIATION VALVE



TAILORED MADE SOLUTIONS FOR ALL KIND OF JOBSITES





PC 506 - CHILE



PCC607 - FRANCE



PC 506 - RUSSIA



PC 506 - PERU



# JOB SITES





**Distributor**



**CIFA** <sup>®</sup>  
A ZOOMLION COMPANY

**CIFA S.p.A.**

Via Stati Uniti d'America, 26  
20030 Senago (Milano) - Italy  
tel. +39.02.990131  
fax. +39.02.9981157

**sales@cifa.com**  
**www.cifa.com**

